

Fabe 348

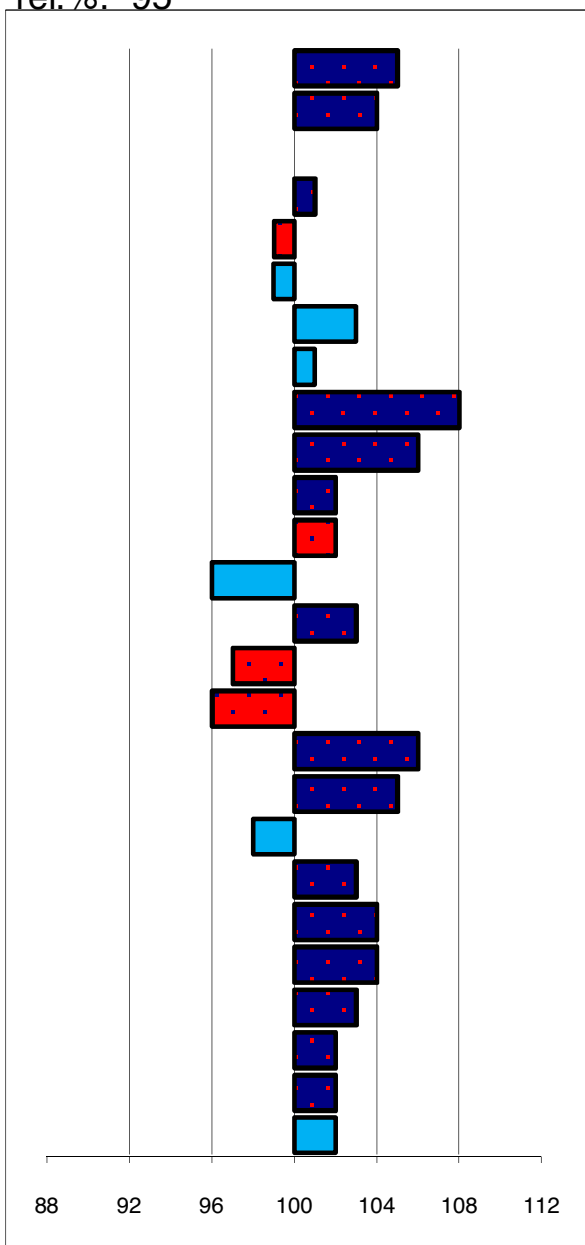
stb199311601
geb.: 27-3-1993

marks allowed: 0,9%
not allowed: 0,5%

s.: Melle *mgs* *mggs*
m.: Kee Romke Ulrig

linear conformation rel. %: 95

105 *plain*
104 *heavy*
100 *short*
101 *horizontal*
99 *steep*
99 *weak*
103 *weak*
101 *horizontal*
108 *short*
106 *downhill*
102 *short*
102 *straight*
96 *sickled*
103 *short*
97 *small*
96 *course*
106 *faded black*
105 *little*
98 *toeing-in*
103 *short*
104 *weak*
104 *short*
103 *weak*
102 *little*
102 *little*
102 *short*



noble **head**
light **head-neck-conn.**
long **neck length**
vertical **neck position**
sloping **shoulder**
tight **back**
tight **loins**
sloping **croup shape**
long **croup length**
upstanding **body**
long **length forearm**
standing under **frontlegs**
straight **hindlegs**
long **pasterns**
large **hooves**
dry **bone quality**
jet black **color**
much **hair**
toeing-out **walk**
long **walk length**
powerful **walk strength**
long **trot length**
powerful **trot strength**
much **balance**
much **suppleness**
tall **size**

major breakdown traits

| type | frame | f & l | walk | trot | total | | |
|------------|------------|------------|------------|------------|------------|------------|------------|
| 104 | 103 | 99 | 104 | 103 | 103 | | |
| ABFP | | | | | | | |
| rel. % | walk | trot | canter | riding | driving | showdr. | total |
| 83 | 99 | 101 | 100 | 101 | 104 | 102 | 101 |